

# **COST Action E51:**

# **INTEGRATING INNOVATION AND**

# **DEVELOPMENT POLICIES FOR THE**

# **FOREST SECTOR**

Gerhard Weiss, Saana Tykkä  
EFICEEC

University of Natural Resources  
and Applied Life Sciences, Vienna

# Innovation !

- Innovation is a key pillar of the **EU** “Lisbon Strategy for Growth and Jobs” from 2000; and the “New Economic Strategy Europe 2020” from 3 March 2010.
- Innovation: is “[...] the implementation of a **new** or significantly improved product (good or service), or process, a new marketing method, or a new organisational method in business practices, workplace organisation or external relations” (OECD, 2005).

# Innovation policies!

- Traditional science and technology approach:
  - follows an understanding of innovation as a **linear** process from R&D to the market;
  - traditional innovation support measures focus on the financing of public and private **R&D**.
- Systemic innovation policy approach:
  - sees innovation as a **complex** process in an environment of multiple actors and institutions;
  - systemic measures address also knowledge transfer, interface management or **learning** processes.

# ... and the Forest Sector?

- ... is often considered as a **mature**, “low-tech” industry with little investments into R&D (?)
- Innovation in mature sectors occur also **without** explicit R&D investments (!)
- The forest sector has a strong **potential** in rural areas and in innovation fields for a sustainable future of Europe, e.g.:
  - Recreation and tourism
  - Biodiversity and nature conservation
  - Bio-energy production and climate change mitigation.
  - Bio-based products, wood construction (cp. LMI)

# COST Action E51

- Start **2006**, end **2010**.
- Coordinating institution: EFI PC INNOFORCE / EFICEEC at BOKU University Vienna, Austria
  - Chair 2006-2009: Dr. Ewald Rametsteiner
  - Chair 2009-2010: Dr. Gerhard Weiss
- 20 Participating countries:  
AT, BU, CH, CY, CZ, DE, EE, FI, FR, HR, IT, LT,  
NO, PO, PT, RO, SL, SE, UK



# Research Questions

1. In how far is innovation **integrated** into development policies affecting forestry and forest sector policy?
2. In how far are these policies **co-ordinated**?
3. Do such policies and measures create an „**innovation enabling environment**“ – i.e. meet the needs of innovating forest sector firms and promote local forest-based sustainable development?

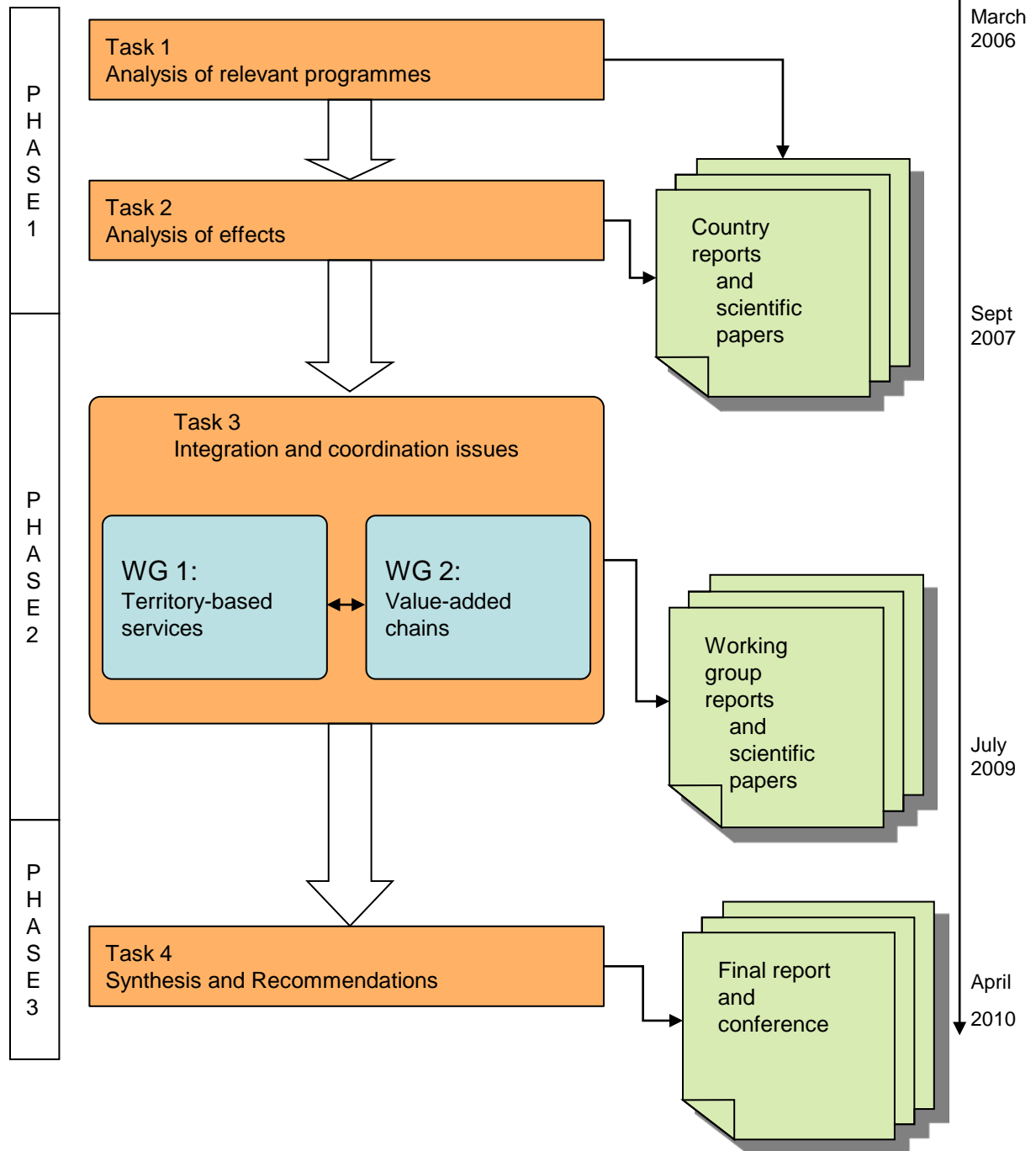
National Policies



Firm / local realities & needs



Synthesis:  
So: what to recommend?





# Working Groups

- **WG1** (lead: Bill Slee) analysed innovation and innovation policies in **territorial goods and services** of forests, e.g.
  - recreation and tourism, health and well-being, environmental services such as nature conservation and climate change mitigation.
- **WG2** (lead: Pekka Ollonqvist) analysed **vertical wood value chains**, e.g.:
  - timber frame housing, furniture, bio-energy provision, non-wood products, or speciality chemicals.

# Methods

- Common country reports, including:
  - Assessment of **innovation frontiers** in the countries;
  - Analysis of central **policy documents** from seven relevant policy fields.
- Comparative case studies from different countries and important innovation fields:
  - Empirical data collection through questionnaires and personal interviews;
  - Cross-country comparisons of sectoral policies and of **case studies** across Europe.

# Activities and Outputs

- Networking and exchange of information: eight joint **meetings**;
- Support for young researchers (**short term scientific missions**);
- Work in more than **20 sub-groups**: conference presentations, journal articles and book chapters;
- COST Action E51 website: <http://www.boku.ac.at/coste51/>;
- Two joint **book publications**:
  - Rametsteiner, E., Weiss, G., Ollonqvist, P. and Slee, B. (2010). *Policy Integration and Coordination: the Case of Innovation and the Forest Sector in Europe*, OPOCE.
  - Weiss, G., Ollonqvist, P., Pettenella, D. and Slee, B. (2011). *Innovation and European forestries: territorial and value chain approaches*, CABI.
- Final Conference in Brussels May 31 - June 1, 2010: **science-policy dialogue**.

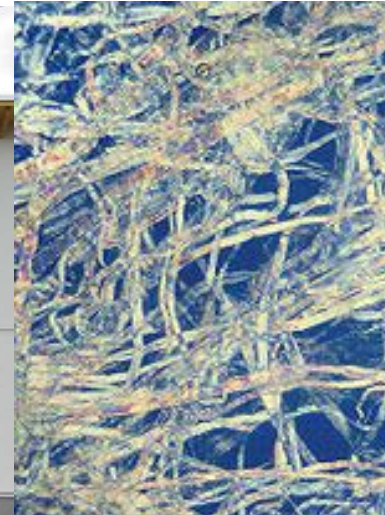
# Results: Innovation fields

- The sector's innovations do **answer** to current societal challenges, e.g. in:
  - recreation;
  - bio-energy.



# Results: Innovation fields

- Rather **blind spots** do also exist, e.g. in:
  - environmental services (biodiversity conservation, drinking water, protection against natural hazards);
  - health-related or spiritual services;
  - sustainable construction (wood);
  - bio-based products (food or chemicals).

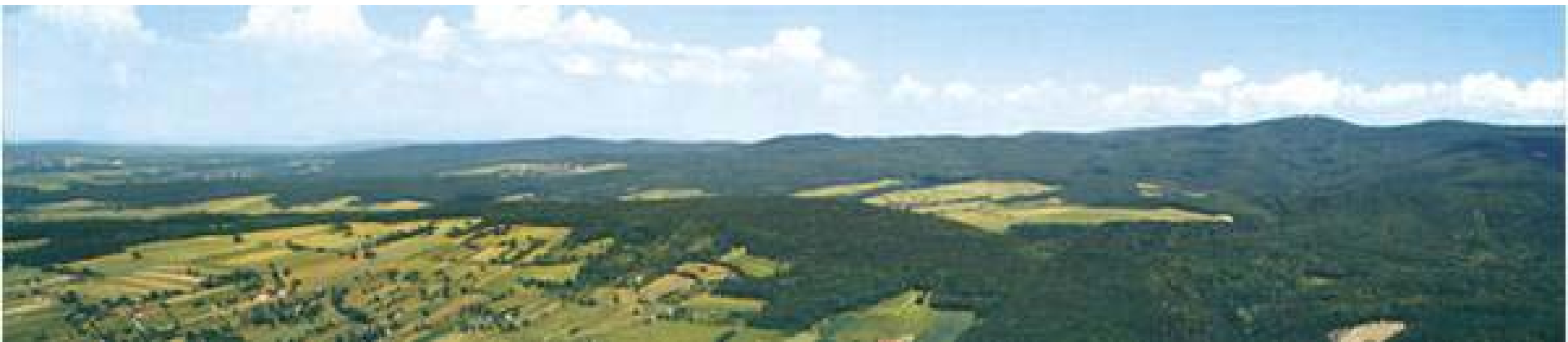


# Integration of Innovation

- A need for innovation is recognized by most policy fields that are relevant for forestry and forest-based industries;
- The concept of innovation, however, is often used only symbolically, **without appropriate and substantial measures**;
- There is a trend to describe the issue of innovation support from a systemic view; however, the measures often remain traditional.

# Challenges for Innovations

- Territorial goods and services:
  - need specific policies because of their (often) **cross-sectoral** and public good characteristics;
  - Policies need to enable the development of **local networks** and partnerships that develop innovations.



# Challenges for Innovations

- Wood value chains:
  - need specific policy measures because of the prevailing **micro, small, and medium-sized** and family-run businesses that are located in rural areas;
  - Innovation infrastructures are needed on the **local-regional** level, oriented at mature sector SMEs.





# Preliminary policy recommendations

- raise awareness for the **importance of innovation** for sustainable development of sector/society;
- develop further **systemic** innovation support measures and strategies;
- support **cross-sectoral interaction**;
- develop support infrastructures that focus on **local networks, bottom-up initiatives, and family-run SMEs and rural micro businesses.**

# Final Conference June 1, 2010

## The role of policy in European forest-based innovation: bridging sectoral and territorial approaches



Forest-Based Sector  
Technology Platform



Royal Flemish Academy of  
Belgium for Science and the Arts



More information at:

<http://www.boku.ac.at/coste51/>

09:20-10:30 Session I:

Coordinated policies for innovation in the forest sectors:  
problem situation and knowledge demand

- **Innovative policies for the sustainable development of the forest sector**  
*(Timothy Hall, EC DG Research)*
- **Innovative future for the forest: Integrated rural development**  
*(Doris Wiederwald, ÖAR regional development consulting, AT)*
- **Innovative future for wood: Making new opportunities real**  
*(CG Beckemann, Innovation Task Force of the FTP, SE)*

10:30-11:00 Coffee break

11:00-12:00 Session II:

Coordinated research on innovation policies and innovation processes in forestry  
and the forest-based industries – The results of the COST Action E51

- **Innovation in territorial services**  
*(Prof. Bill Slee, Macaulay Land Use Research Institute, UK)*
- **Innovation in wood value chains**  
*(Prof. Pekka Ollonqvist, METLA, FI)*

12:00-12:30 Discussion of morning sessions

14:00-17:00 Session III: Intersectoral discussion forum:

How to coordinate policies for an innovative forest sector?

Round 1: What policies are needed for an integrated wood value chain management?

Andreas Kleinschmit, FTP

Rosario Alvez, Forest Association of Portugal

Attila Lengyel, CEPF

Jeremy Wall, DG ENTR

Gert-Jan Nabuurs, EFI

and representatives of COST Action E51

15:00-15:30 coffee break

Round 2: What policies are needed for integrated rural development?

Inazio de Arano, USSE

Tamas Szedlak, EC DG AGRI

Fabio Cossu, European Network Rural Development

Martin Greimel, AT Ministry of Agriculture and NSG of FTP

Zuzana Sarvasova, National Forest Centre in Zvolen, SK, and EFICEEC

and representatives of COST Action E51

16:45-17:00 Wrap up of discussion

17:00-17:15 Concluding remarks and closing of conference